

INSTA

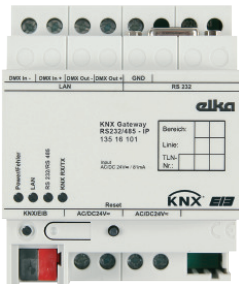


genetic high efficiency

KNX GATEWAY RS232/485-IP



KNX Gateway RS232/RS485-IP



Intelligent system device for coupling of different external systems with RS232/RS485 or Ethernet interface to the KNX/EIB. To this effect, the gateway is connected to the KNX, the external system is provided with a standard RS232, RS485 or Ethernet interface. The gateway needs AC/DC24 V supply voltage.

Please note:

A protocol adaptation can be effected in the KNX-Gate2 tool software or inquired separately on demand.

- + Be-directional telegram routing between KNX and RS232, RS485 or Ethernet
- + Up to 500 freely-definable strings to connect devices with firm protocol
- + Tracing of telegrams for diagnosis purposes
- + Baud rate to the subsystem adjustable
- + Transmission behaviour to the subsystem can be configured
- + KNX telegram rate limitation to be selected
- + Max. 2000 group addresses (resource-dependending)
- + The gateway is downward compatible to older product versions
- + Firmware updates possible
- + Free configuration software

- Auxiliary supply:
DC24 V \pm 10 % or
AC24 V \pm 10 % 50-60 Hz
- Power consumption: approx. 2 VA
- Connection screw terminals:
single-wire: 0.50...4.0 mm²
finely stranded without wire-end sleeve: 0.34...4.0 mm²
finely stranded with wire-end sleeve: 0.14...2.5 mm²
- Connection KNX: Terminal block
- Supply voltage KNX:
DC21 V...32 V SELV
- Power consumption KNX:
typ. 150 mW
- Coupling to external systems:
1 x RS232 (SubD 9-polig) or
1 x RS485 (screw terminals) or
1 x Ethernet
(RJ45, 8/4-pole, 10 MBit/s)
- Temperature
ambient: -5 °C to +45 °C
storage/transport: -25 °C to +70 °C
- Protection type: IP 20 DIN 40050
- Housing: 4 TE (approx. 70 mm)
- Fastening: DIN-rail EN 50022

Description	Type	Art.-No.
KNX Gateway RS232/RS485-IP	K-RS232/485GW.01	135 16 101
Power supply DC24 V (1 TE)	SV230-24.0400DC	140 01 913
Power supply AC24 V (4 TE)	SV230-24.1AC	110 01 924

Tool software KNX-Gate2

By means of the tool software KNX-Gate2 the gateway is programmed either via the Ethernet or the RS232 interface. The gateway operates with ELKA standard ASCII protocol or with up to 500 freely definable strings and thus allows variable protocol connection to terminals with serial interface like beamer or TV sets.

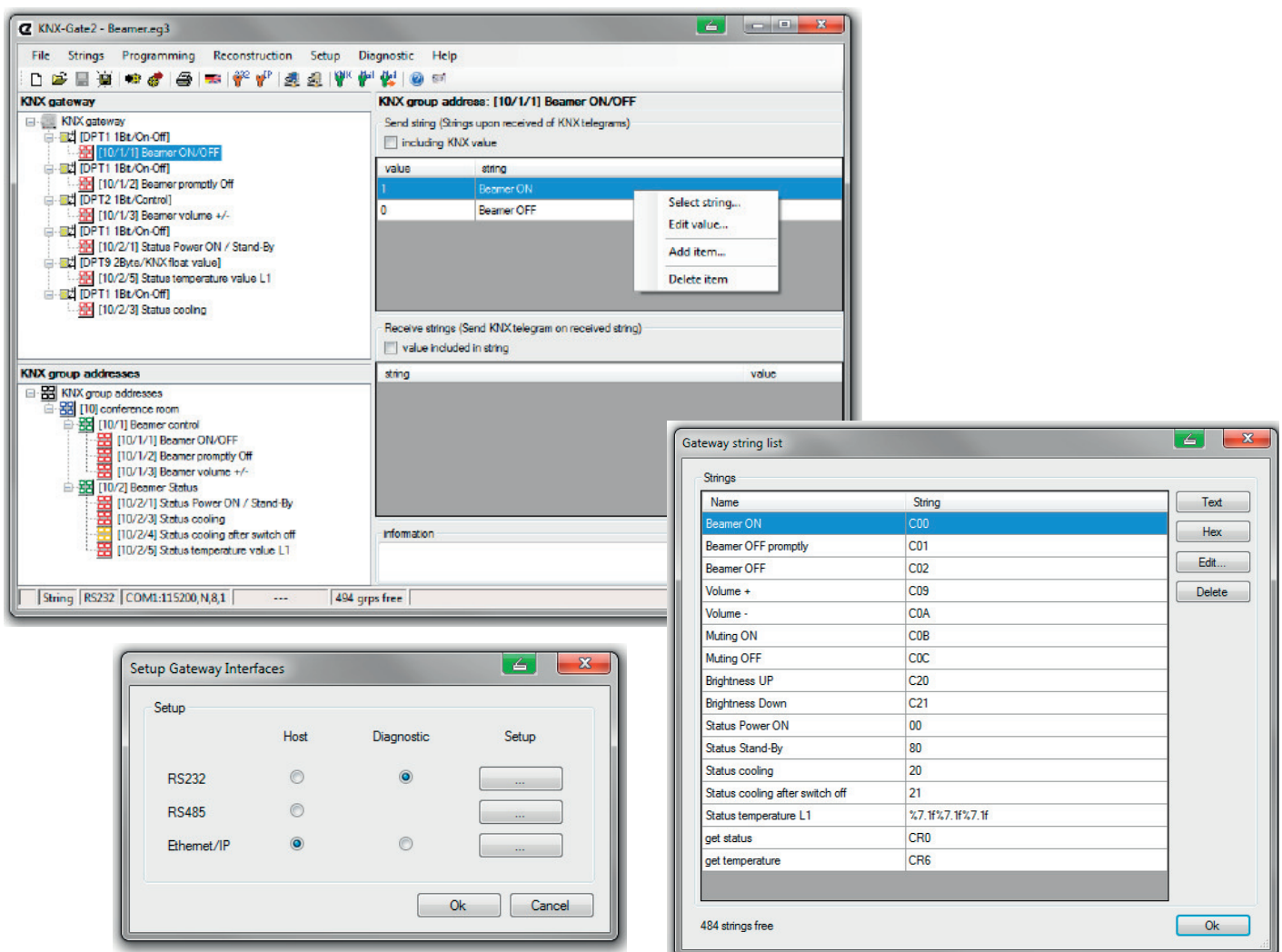
Depending on the parameter setting, communication is effected via RS232, RS485 or Ethernet. Independent of the configured communication path, e-mails can be sent in case of trouble. For diagnosis purposes via RS232 or Ethernet a trace mode in the KNX-Gate2 can be activated via which the transmitted data between KNX and the subsystem are

listed in case of service. The KNX-Gate2 supports reading out of already projected gateways (reconstruction) and programming of the physical address of the KNX project.

2- and 3-digit group addresses as well as free group address structure are supported.

The ETS group addresses can be imported by xml or csv-files or projected in the configuration tool.

The tool software KNX-Gate2 is available in German and English language and can be downloaded free-of-charge at www.elka.de.



Insta Elektro GmbH
Hohe Steinert 10
58509 Lüdenscheid
Germany

Telephone +49 2351 936-0
Telefax +49 2351 936-1780

contact@insta.de
www.insta.de